

Welcome Chaperones!

Thank you for choosing to spend time with your child's class at the Museum. Your role as chaperone is essential to insuring that your group has a positive experience. To help you get started, this guide asks questions about a few exhibits related to students' curriculums. You also can help students find answers to their OWN questions by reading exhibit labels and talking with Museum staff. Remember: students must stay with chaperones at all times.

For more information on planning your visit, please visit the Museum's Web site: www.naturalsciences.org

First Floor

Find the Coastal North Carolina gallery
Find the maritime forest display. Live oak, yaupon holly, and wax myrtle are three common trees in this habitat.

- 1 What protects the leaves of these trees from salty spray?

Find the Treasures of North Carolina gallery

Find the block of Mount Airy granite, North Carolina's official state rock.

- 2 What is it used for?

Second Floor

Find the Mountains to the Sea gallery

Go to the savanna area, and find the carnivorous plants. These insect-eating plants often grow in soils low in nutrients (similar to vitamins). These plants get extra nutrients from the animals they trap and digest.

- 3 Choose one of the five species of carnivorous plants. How does this plant catch insects?
- 4 Are carnivorous plants producers, consumers or decomposers?

Third Floor

Find the Prehistoric North Carolina gallery
Go to the Mesozoic Triassic landscape.

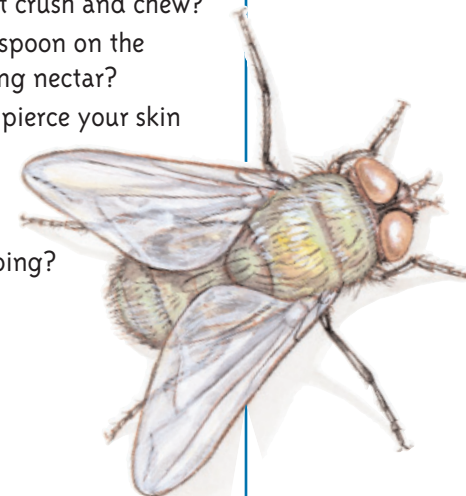
- 5 Identify a carnivore and a herbivore. How do they interact with each other?
- 6 Find another example of a carnivore and a herbivore in the Prehistoric North Carolina gallery.

Fourth Floor

Find the Arthropod Zoo

Find the display with the models of the four insect heads, across from the giant beehive. Different kinds of mouthparts allow insects to eat different foods.

- 7 (Read the options one at a time. Let the students match the model to the description.) Which insect has
 - A. Strong mandibles that crush and chew?
 - B. A long tongue with a spoon on the end, perfect for lapping nectar?
 - C. A long, sharp tube to pierce your skin and drink blood?
 - D. A solid, flat moplike tongue with tongue tubes for slurping?



Laurie O'Keefe

Answers to questions

- 1 A thick, waxy layer called a cuticle
- 2 Buildings, monuments, gravel for roads and other construction
- 3 Venus' flytrap—traps close; pitcher plant—insects fall in; sundew—insects get stuck; butterwort—insects get stuck; bladderwort—insects are sucked into underwater trap
- 4 They are producers because they carry out photosynthesis
- 5 Carnivores: Rautisuchid or Rutiodon; herbivores: Placerias
- 6 Various answers
- 7 A. cockroach; B. honeybee; C. mosquito; D. house fly